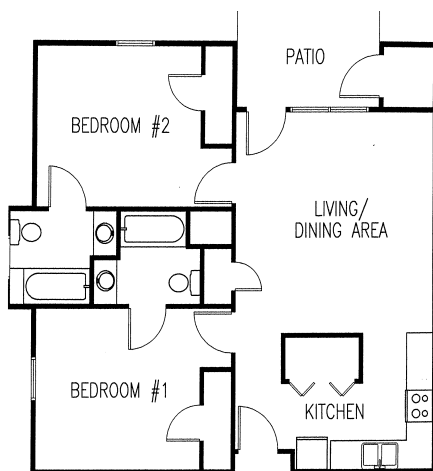
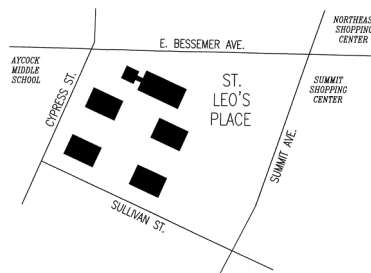


1 BEDROOM UNIT



2 BEDROOM UNIT



ment controls for air conditioning and heat, safety and emergency signal switches, patio, carpeting, and bath facilities with grab bars. St. Leo's also features a number of handicapped accessible units and common use areas including a beautifully appointed community day room, on-site office, coin-operated laundry room, generous parking space, and throughout the school year, the distant music playing school children at Aycock Middle School across the street. Where yesterday and tomorrow meet, Greensboro's first and newest enterprise of the new millennium:

ST. LEO'S PLACE

805 Sullivan Street

Greensboro, North Carolina 27405

(336) 379-0000

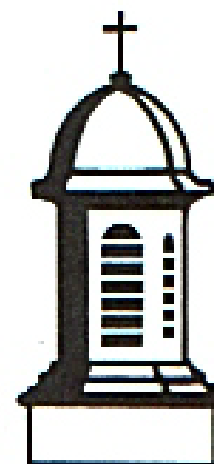
stleos@beacon-nc.com

Office Hours:

Tuesday, Thursday and every other

Friday, 8:00AM—5:00PM

**ST. LEO'S
PLACE**
*Where
Yesterday
and
Tomorrow
Meet.*



ST. LEO'S PLACE

If you are 55 or older, you can make St. Leo's Place your address. A unique independent living experience, Greensboro's distinctive apartment community for older adults is located where St. Leo's Hospital and Notre Dame High School once stood. At the edge of the 21st Century . . . well-situated, well-designed, well-equipped, and well managed . . . for you.

You can feel Greensboro's history all around

you. You can see the trees that have overlooked history for more than a century in this quaint but exciting community, the proud Charles B. Aycock Historic District. You can hear the gentle soft voices of the highly skilled nurses at the hospital of nearly 100 years ago . . . the laughter and recitations of serious-minded but joyful students at the school that took the hospital's place after 50 years.

A convenient block away by sidewalk, at the corner of Bessemer and Summit Avenues shopkeepers and vendors of all sorts

to serve you at two shopping centers. And Greensboro's buses are ready to take you to other points, including nearby places of worship and first-class medical facilities.

Special words describe St. Leo's: convenient, comfortable, budget-friendly, modern, accessible, interesting, and picturesque. You don't have to be wealthy to live in this affordable community. Income limits are revised annually and please contact the site manager for the current limits.

Each one-bedroom and two-bedroom unit features ground-level living, fully-equipped kitchen including range, refrigerator, dishwasher, and washer/dryer connections, apart-

