

# GREENTREE APARTMENTS

A community fully renovated to provide convenient affordable family living. Greentree now offers one hundred beautifully updated one-, two-, three-and four-bedroom apartments. One of these restored apartments can now be your new home.



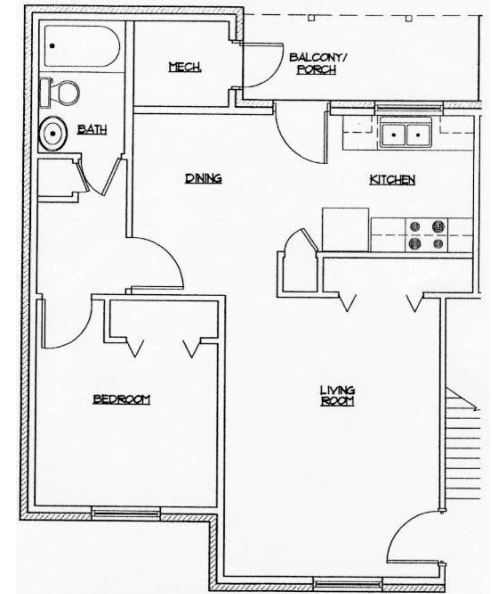
Every apartment in this community offers a fully equipped kitchen including range and refrigerator, new floor coverings, central air, ceiling fans, and outdoor patio. Greentree also features an on-site office, a beautifully appointed clubhouse, coin-operated laundry room, playground and computer center with internet access.

To live in these apartments, one needs not to be wealthy. In fact, your yearly household income at the time of admission may not exceed the following:

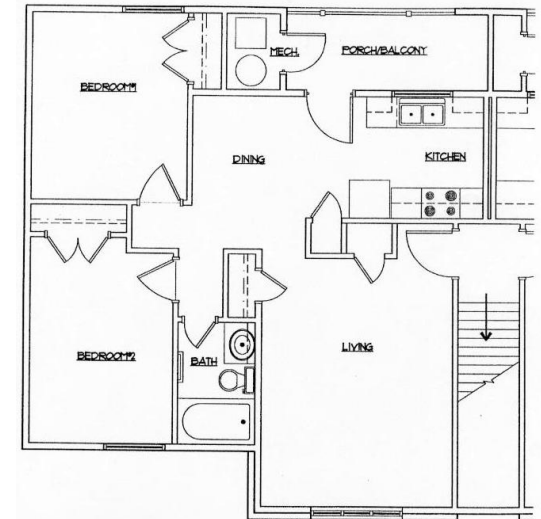
Household Size	Maximum Income *
One Person	\$22,740
Two Persons	\$26,040
Three Persons	\$29,280
Four Persons	\$32,520

\* Income restrictions apply; see manager

To receive an application or further information, please call (910) 791-0498.



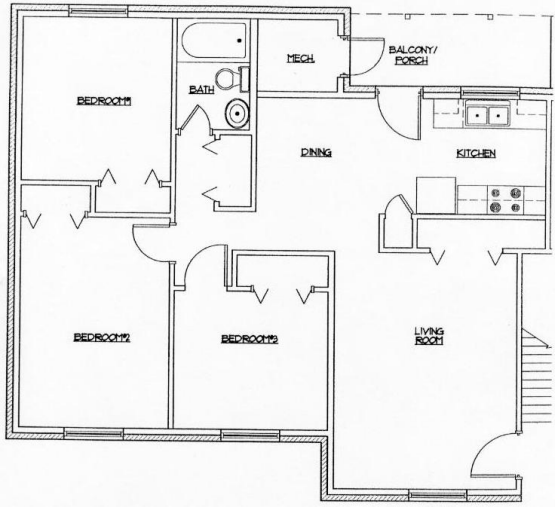
One Bedroom



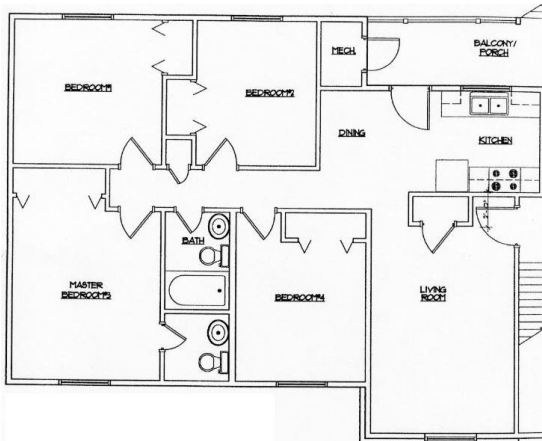
Two Bedroom

# GREENTREE APARTMENTS

4615 Greentree Road  
Wilmington, NC 28405-2207  
Phone: (910) 791-0498  
Fax: (910) 452-1466  
greentreeapts@bellsouth.net



Three Bedroom



Four Bedroom



Leasing Agent:  
Beacon Management Corporation  
P.O. Box 29229  
Greensboro, NC 27429-9229  
(336) 545-9000  
www.beacon-nc.com