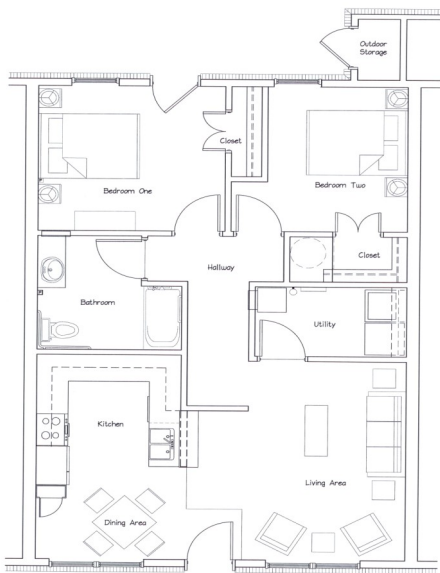


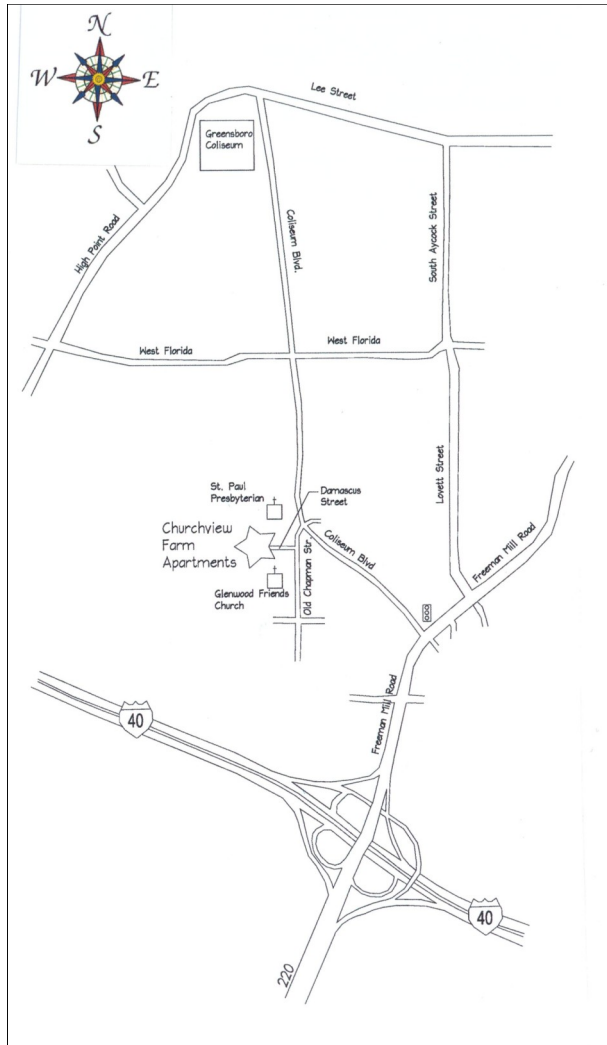
**ONE BEDROOM OPTION**

Rents ranging from \$390—\$608 per month



**TWO BEDROOM OPTION**

Rents ranging from \$463—\$683 per month



# Churchview Farm

2200 Shepherd Watch Court  
Greensboro, NC 27403



Beacon Management Corp.  
408 Battleground Avenue  
Greensboro, NC 27401

(336) 545-9000

Telephone: (336) 316-0456

Fax: (336) 316-0442

[churchview@beacon-nc.com](mailto:churchview@beacon-nc.com)

# Churchview Farm

Churchview Farm is a new well designed energy efficient apartment community for seniors located in an ideal setting in the Glenwood area of Greensboro. Situated in a quiet neighborhood, the property is a short drive to City Center and enjoys a close proximity to shopping, banking, services, restaurants, churches, major highways, a city park and the Greensboro Coliseum.

Churchview's architecture has been carefully planned and modeled after the very popular Rankin King Farm community in northeast Greensboro. The development's facilities have been designed with the important things in mind—safety, convenience, comfort and affordability.

Churchview Farm is comprised of 60 one-bedroom and 8 two-bedroom beautiful craftsman styled

apartments. All buildings are age friendly and offer ground-level non-ambulatory access and a variety of security features. Each apartment possesses its own highly efficient energy star heating and air conditioning system and personal patio space with storage. Kitchens are fully equipped with range, refrigerator, dishwasher and washer/dryer connections.

The community building displays a spacious and beautifully appointed activity room, a resident computer center, an on-site management office, and a coin-operated laundry. Outdoor seating, garden spots and generous landscaping decorate the property's exterior.

If you are age 55 or older, you can make this exciting, attractive neighborhood your address. One need not be wealthy to live at Churchview Farm. In fact, one's 2013 annual income at the time of

admission may not exceed \$24,600 for a single person or \$28,080 for a married or two-person household. These admission income limits are revised annually and contact the site manager for any updates.

If you have any questions or would like more information on leasing opportunities, please contact us at the management office at:

## Churchview Farm

**2200 Shepherd Watch Court  
Greensboro, NC 27403  
336-316-0456**

[churchview@beacon-nc.com](mailto:churchview@beacon-nc.com)

**Or visit us on the web at:**

[www.beacon-nc.com](http://www.beacon-nc.com)

We look forward to talking with you about your new home!

